

Micro Axial Series

Ultra Compact Indoor Loudspeaker

Two way coaxial, bass reflex
5" driver with 1.5" coil
1 dome tweeter

Features

Ultra compact
Visually discreet
Studio monitor-like performance
Anti-diffraction baffling

Applications

Nearfield listening
Distributed audio
Delay/in-fill

Specifications

100 W AES
92 dB SPL@1W at 1m
16 ohm
105° conical dispersion
6.7" x 6.7" x 6.7" (170 x 170 x 170 mm)
2 thermal protection circuits

Mono amplification mode
Optional subwoofer

Available in white (MX0W)

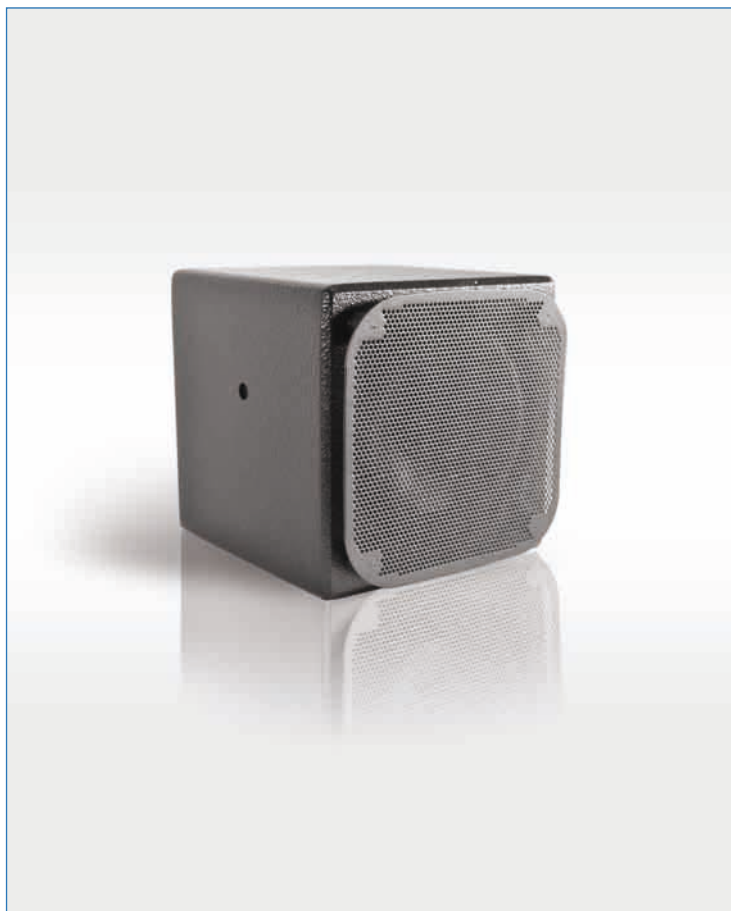
The APG MX0 is a miniature 2-way full range loudspeaker. The low/mid frequencies are handled by a 5" long-throw driver loaded in a bass-reflex enclosure, while HF is handled by a coaxial dome tweeter.

The coaxial technology and acoustic baffling ensure a coherent and linear acoustic field with a substantial reduction in diffraction phenomena. The tweeter is physically aligned with the bass driver which results in a particularly linear phase response with a 105° conical dispersion pattern.

The MX0 is characterised by its ultra-compact size and audio quality that is comparable to the best studio monitors on the market, but with even better performance and power handling. The ergonomics remain simple, but dedicated to the needs of fixed installation: cubic format; recessed Phoenix connectors for discreet cabling; metal inserts for stand-/wall-/ceiling-mounting via the ETMX0 bracket; fitting for optional 70/100V line transformer.

The DMS26 and DMS48 digital processors provide loudspeaker management and filtering for the MX0 in full range mode combined with a subwoofer. APG recommends the SB115 subwoofer.

MX0



MX0 loudspeaker

The MX0 is a satellite speaker optimised for highly accurate sound reinforcement in fixed installations. It may be used for distributed systems, nearfield listening, delay/in-fill, or as a main PA with or without subs. Thanks to its reduced form factor, MX0 is aimed at small to medium-sized venues although as part of a distributed system, it can be used to cover very large areas as well. It is an ideal choice for applications where discretion needs to be combined with optimal intelligibility.

The MX0 may be wall- or ceiling-mounted thanks to the optional ETMX0 bracket, but can also be stand-mounted or simply placed on a suitable surface. Although it has an impedance of 16 ohms, it can be fitted with an optional 50W transformer for 70V/100V line applications.

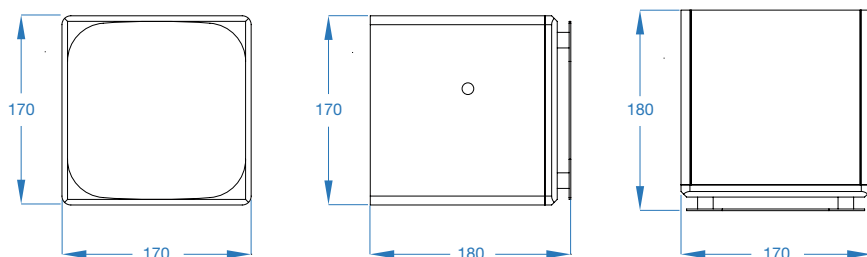
In full range mode, the MX0 is ideal for vocal reinforcement such as conferencing, background music as well as delay/in-fill applications. When combined with appropriate subwoofers, MX0 provides an ultra-compact solution for FoH systems in small spaces such as bars, small clubs and theatres etc.

APG's digital processors offer a number of speaker management options to handle the MX0 in any application or configuration.

APG

MX0

Technical Specifications



Features

	Low section	High section
Frequency response with processor	(± 3 dB) 65 Hz to 2500 Hz	2500 Hz to 19 kHz
Frequency response without processor	(± 3 dB) 80 Hz to 2500 Hz	2500 Hz to 19 kHz
Sensitivity 1W to 1m, $f > 80$ Hz	92 dB SPL (1)	
Max continuous level to 1m, $f > 80$ Hz	112 dB SPL	
Peak continuous level to 1m, $f > 80$ Hz	118 dB SPL	
Coverage angles	105° conical (2)	
Nominal impedance	16 ohm	

Components

Transducers	1 x 5" ventilated driver	1 x dome tweeter
Coil diameter	1.5" (37 mm)	0.6" (14 mm)
Type of load	Bass reflex	Coaxial horn

Power

Recommended amplifier	100 to 200 W
Peak	300 W
AES (3)	100 W

Construction and characteristics

Cabinet	12mm marine MDF
Passive crossovers	Air core inductors, plastic film capacitors, wirewound resistors
Overload protection	Thermal circuit breaker with automatic reload
Finish	Highly durable black aquarethane coating
Front panel	Perforated steel grille with 5mm black acoustic foam
Connectors	Phoenix 4-way
Handle	1 integrated, recessed handle
Stand mount	Microphone stand mounting point
Dimensions (H, W, D)	6.7" x 6.7" x 6.7" (170 x 170 x 170 mm)
Net weight	11lb (5 kg)
Gross weight, packing x 2	26lb (12 kg)

Options and Accessories

ETMX0 (4)	Lyre bracket for MX0
ETMX0W	Lyre bracket for MX0W (white version))
INOX0 (5)	Stainless steel screws & waterproofing for cone driver
T50	50W line transformer 70V/100V

Signal Processing

The SPMX0 static processor provides system alignment, cross-over, infrasonic and ultrasonic protection and distribution of signals; a mono subwoofer output with front panel adjustment feeds an optional subwoofer amplifier channel.

Although the MX0 is a passive speaker system, the specifications table clearly shows a high and a low section. With this information, the precise amount of energy reproduced by each transducer can be worked out as well as the frequency bands within which they operate.

(1) The 92dB efficiency measurement is taken after attenuation ; before attenuation the sensitivity is 99dB. This attenuation not only allows the system to become linear but also increases the power handling in the given frequency range.

(2) The dispersion is controlled from 800 Hz, the given angles are irrelevant below this frequency.

(3) In order to take full benefit of the dynamic performance, sonic quality and reliability of the speakers, the recommended amplification must at least correspond to the AES rating. Lesser amplification is acceptable for applications requiring less power (near-field, distributed systems,...), whilst not being less than half the AES rating. The AES power handling corresponds to a 2 hour test using weighted pink noise (peak factor of 6dB) through a frequency range of one decade.

(4) ETMX0 is a 4 mm steel bracket allowing installation of speakers on either wall or ceiling with angle adjustment.

(5) Stainless steel screws and waterproofing of speaker cones.

5 YEARS WARRANTY *A five years warranty covers passive filters, transducers and compression drivers. The warranty does not cover cosmetic damages and damages due to misuse, improper installation, or damages caused by alterations.

Printing : March 2014

APG has a comprehensive research and development policy for the continual improvement of its products and service. Due to this, new materials, manufacturing methods and technological changes may be introduced without prior notice. As a result, an APG product can differ from its published description in certain areas. However, unless otherwise indicated, its characteristics will always equal or better the published specifications.